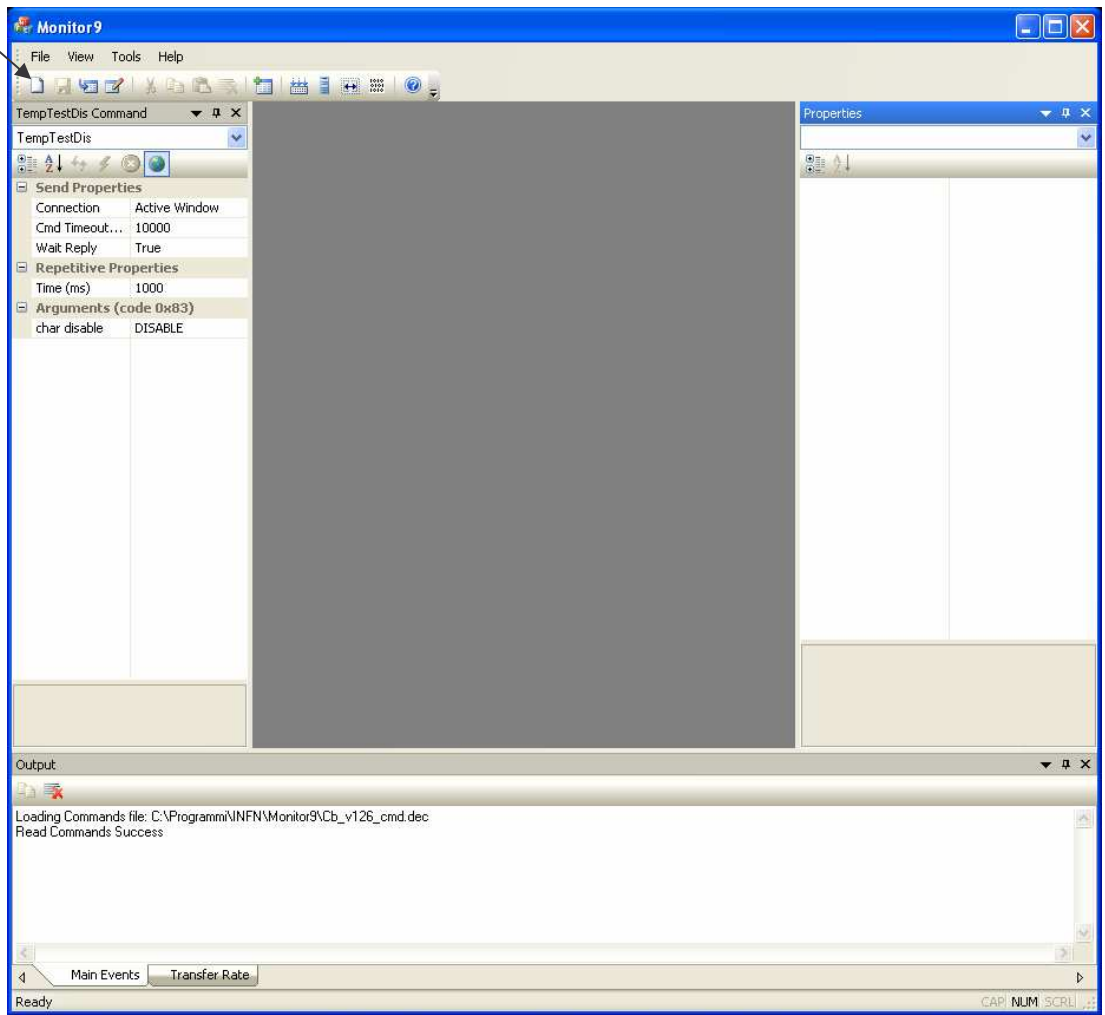
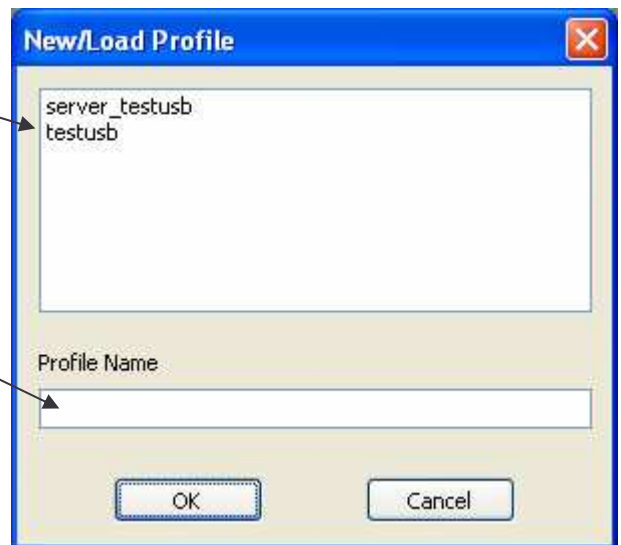


Create new connection



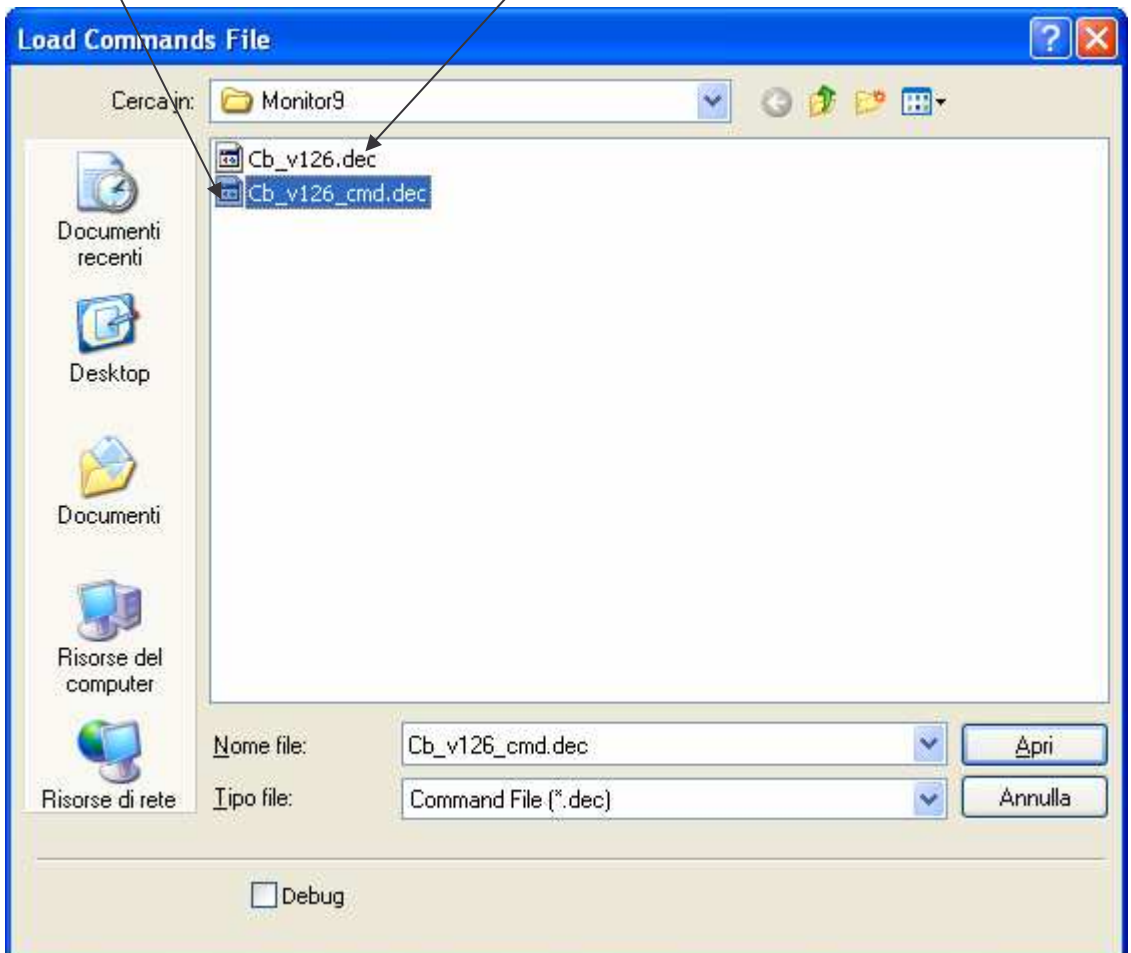
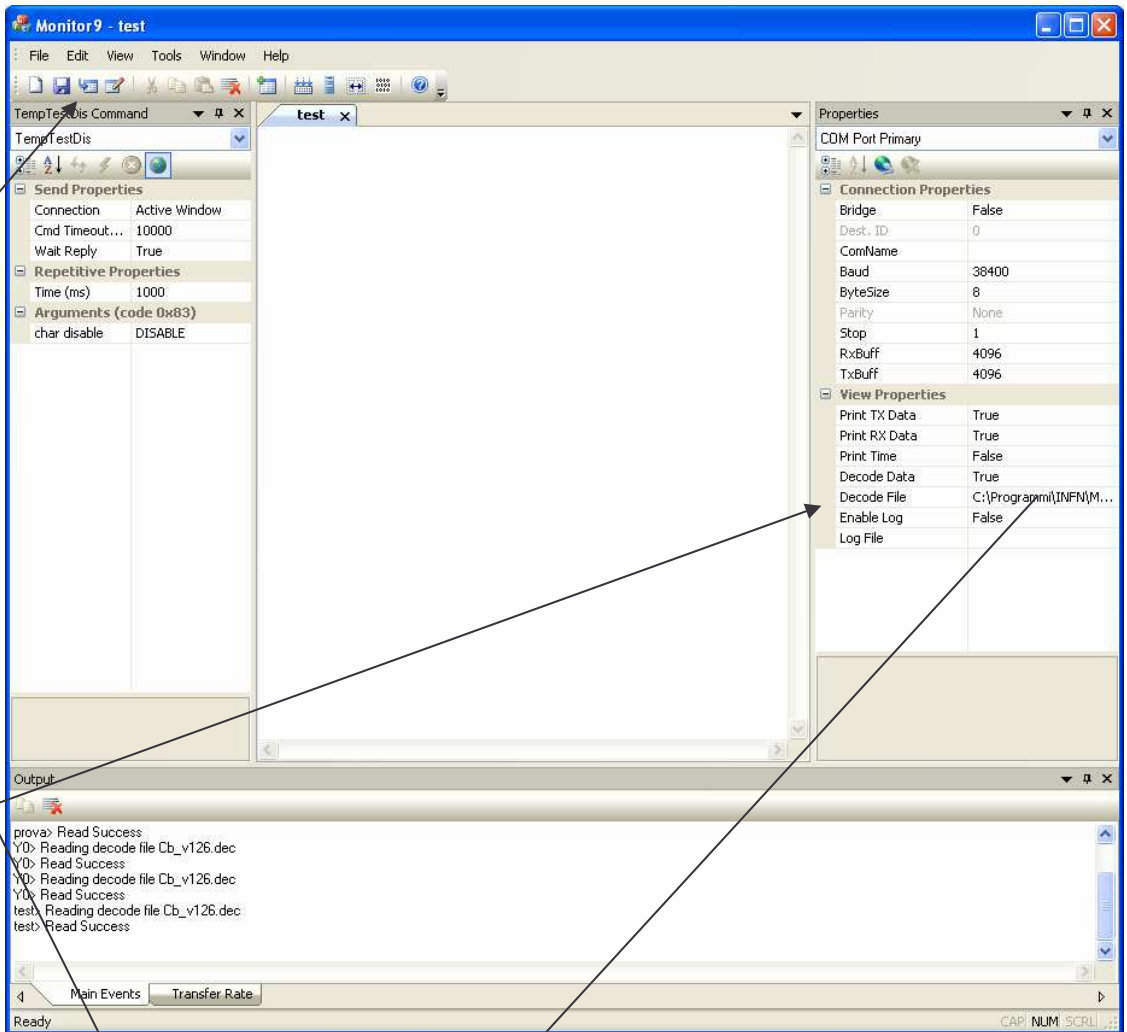
Profile saved

insert new profile name



Load commands file. Now the command file is always loaded when run monitor9

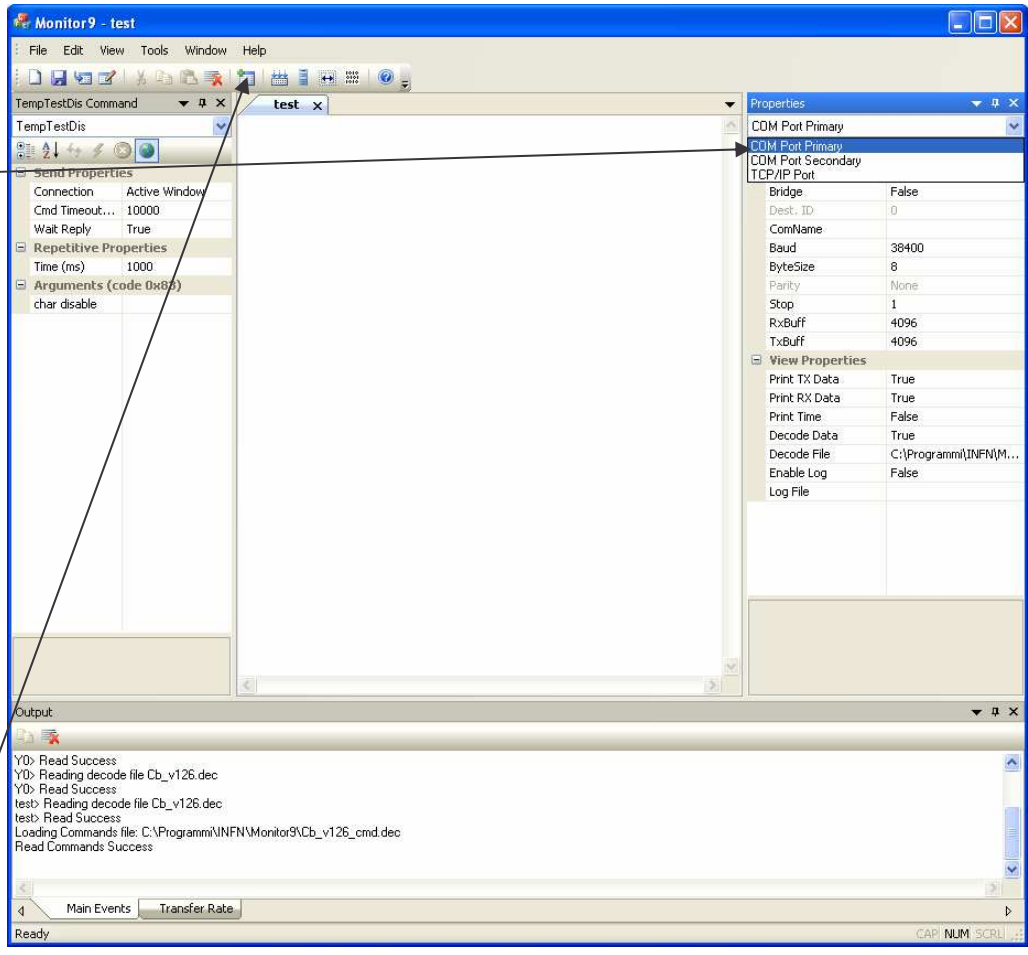
Decode return data file



Connections type:
 COM Port
 Primary is optical
 RS232 on
 minicrate.

COM Port
 Secondary is
 Debug RS232 port
 or RS485 port on
 minicrate

TCP/IP Port is
 connection
 between Server



New Command window

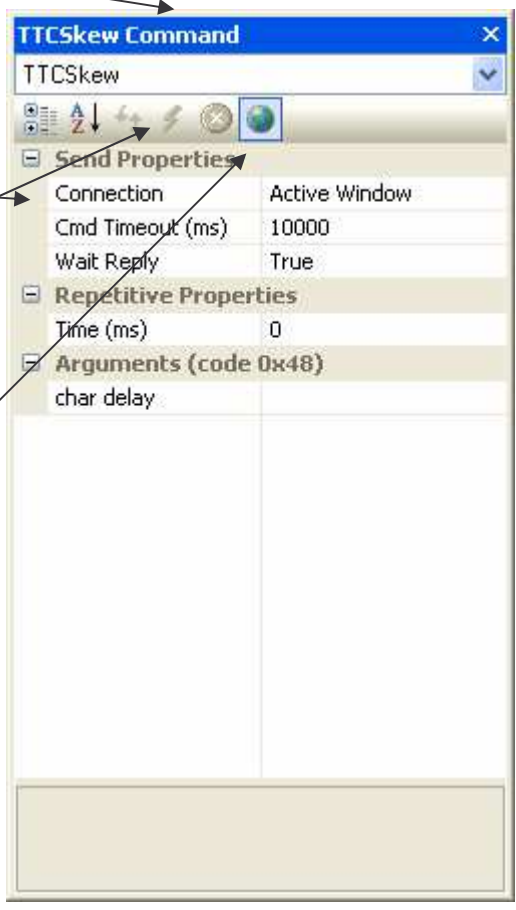
Command selected

Connection selected

Command arguments

Send Command (disabled because
 not yet connected) or active window is
 a tool window (server, xdaq, spy,
 firmware update).

All commad window use the same setup
 (Connection, Cmd Timeout, Wait Reply)
 if selected.



click on
Connect
so Send is
enabled

Set
minicrate
ID, can
use
0xFFFF if
connected
on Debug
port only

