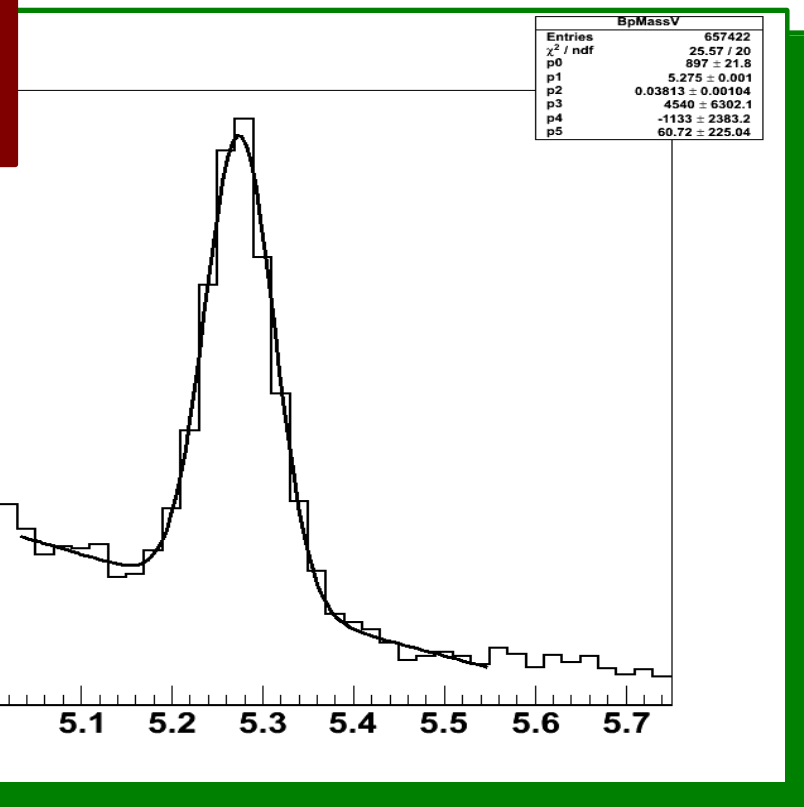
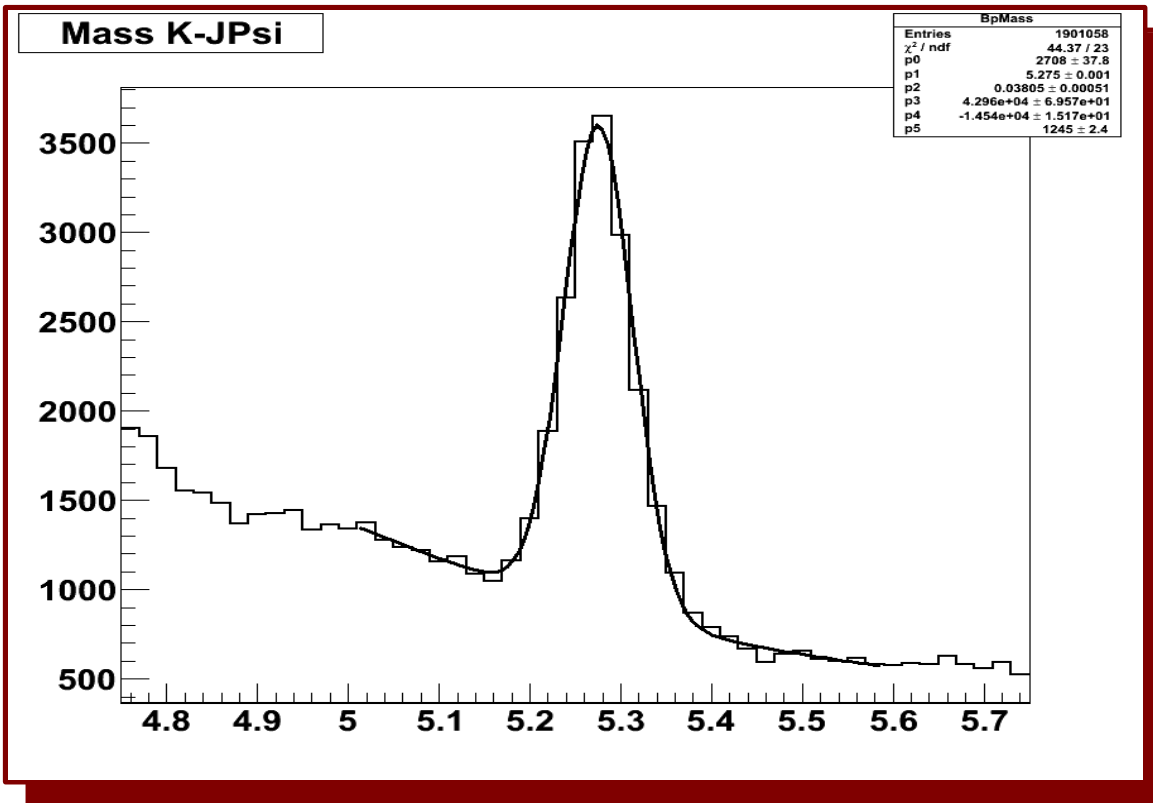


$$N(B^+) = 244\,000$$

$$N(\text{fake } K) = 2350$$

$$(\Pi(K \rightarrow \mu) = 0.0096 \pm 0.001)$$



$N(B^+ @ \text{peak}) = 2708$

$N(\text{vertex} @ \text{peak}) = 897$

Vtx eff = 33%